



starkstrom

a Progility company

Powering Healthcare

+44 (0)20 8868 3732

www.starkstrom.com

S700 RETRACTABLE BOOM PENDANT

Series 700

A retractable boom arm pendant system which can be either integrally fitted within the return air collar of a Howorth UCV canopy or alternatively installed as a standalone solution with extended ceiling cowl arrangement.

The pendant is designed to rotate 270 degrees within the clean zone, or alternatively the rotation stops can be set to allow 270 degree rotation outside the canopy. Available for UCV canopies with and without side screens.

This solution provides a neat and tidy approach that actually works with the UCV canopy and eliminates any clashing with UCV side screens.

Clinical and Commercial Benefits:

- Rise and fall facility, can retract to above safe head height when not in use.
- Easy access to gas, power and data.
- Maximises useable space within the UCV theatre.
- In a UCV theatre the S700 is fitted into the return air collar of the UCV canopy itself negating the need for a separate first fix, thus reducing cost and affecting perimeter general lighting layout.
- Oval arm design reduces dust build up and facilitates easy cleaning.
- Provides efficient access for medical equipment for both surgeon and anaesthetist.
- Horizontal mounted gas terminal units for quick and easy connection
- Standard 300mm stroke motor.
- Can be fitted with proximity sensor.
- Keeps the floor space clear around the patient.
- Full installation, commissioning and service available.

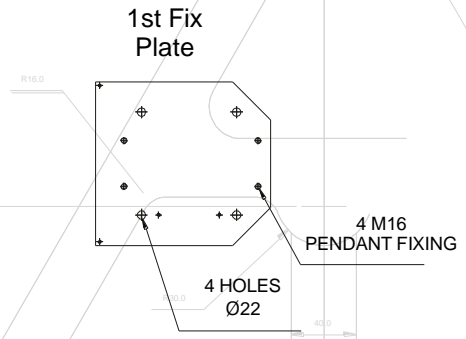
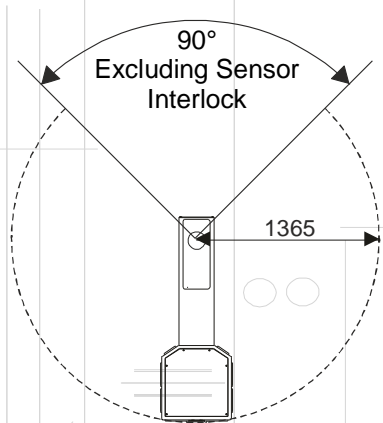
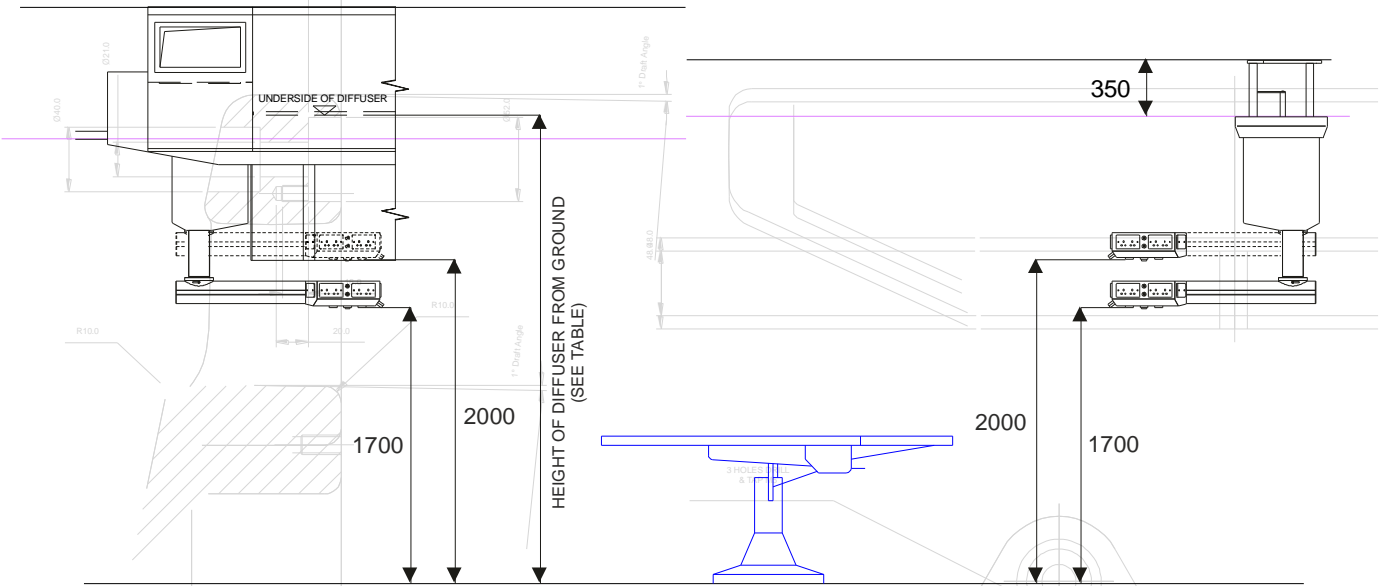


www.starkstrom.com

256 Field End Road, Eastcote, Ruislip, Middlesex, HA4 9UW, UK
Tel: +44 (0) 20 8868 3732 Fax: +44 (0) 20 8868 3736

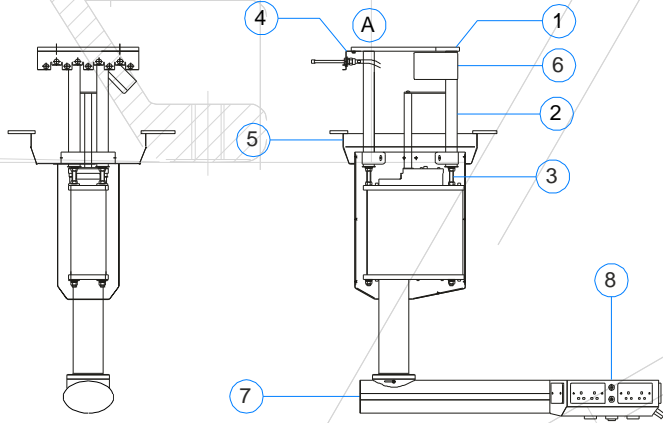


S700 RETRACTABLE BOOM PENDANT - TECHNICAL DATA SHEET



UCV MODEL	Height Above Ground
UCV28	2750mm
UCV32	2850mm
CONVENTIONAL	2700mm

Ref	Description	
1	First Fix Plate	○
2	Support Tube	○
3	Threaded Rod M16	○
4	NIST Termination Plate	○
5	Ceiling Shroud	○
6	Motor and Electrical Terminal Box	○
7	Arm	○
8	Pendant Head	○



Maximum Loading At 'Position A'		
S700 Description	Load	Torque
S700 Multi-Movement	3081N	2529Nm

Capacity	
Motor Rating	— 240v 50Hz 260W 1.2A
Internal Bearing Diameter	— Ø105
Head Capacity	— 14 Electrical Outlets — 9 Medical Gas Outlets