



starkstrom

a Progility company

Powering Healthcare

+44 (0)20 8868 3732
www.starkstrom.com

Series 300 Hammer Head

Overview

The S300 Hammer Head pendant is a pneumatically braked ceiling mounted lateral and vertical movement pendant for operating rooms or hybrid operating rooms and endoscopy, anaesthesia and critical care areas. The maximum arm capacity is up to 90kg. A variety of arm and head lengths and widths are available depending on the procedures and services required.



Clinical Benefits

- Rise and fall facility, can retract above safe head height when not in use.
- Can accommodate most low ceiling theatre installations.
- Simple colour coded braking system.
- Highly flexible - can be easily and safely repositioned to suit different cases and procedures.
- Neatly managed bed spaces reduce visual impact on patient and visitors.
- Integral Medi-rail and facility for mounting more accessories.
- Upgradeable, modular design accommodates any medical services – up to 90kg arm payload.
- Medical gas, electrical, data, AV sockets and nurse, crash call outlets at a safe operational height.
- Standard and bespoke accessories are available.
- Integral cable management provides a safe and organised environment.
- Freedom from hazardous trailing leads and hoses.



Commercial Benefits

- Low maintenance requirement.
- Modular design with low lifetime cost.
- UK manufactured - competitive



www.starkstrom.com

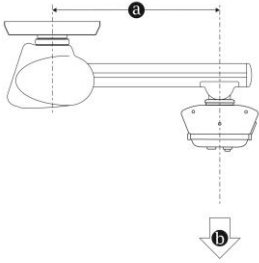
256 Field End Road, Eastcote, Ruislip, Middlesex, HA4 9UW, UK
Tel +44 (0) 20 8868 3732 Fax +44 (0) 20 8868 3736



Product Specification

Operational Temperature range:	10°C to 40°C
Operational Relative Humidity range:	30% to 75%
Electrical socket outlet circuit rating:	230v 16A
Atmospheric Pressure range:	700 to 1060hPa
Brake circuit compressed air supply:	4 to 7bar (400 to 700kPa)
Painted components finished in RAL9010 matt white epoxy powder as standard (other colours are also available).	

Series 300HH-System Loading Variations

	a	b
	1000 mm	180Kg
	Series 300HH Maximum Pendant System Load	
* Figures shown are maximum load for the pendant system and do not include loads exerted by accessories or equipment. For remaining/allowable user load, subtract accessory and equipment loads from the figure given at b.		

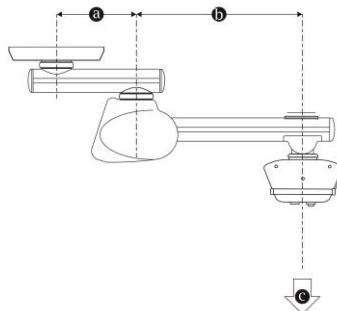
Lift Motor Control Unit

Electrical rating (input):	230v, 50Hz, 20A
Electrical rating (output):	24vDC (motor), 300mA (sensors)

Lift Motor Assembly

Electrical rating:	24vDC, 5A Maximum
Raise/lower torque:	4000N

Series 300HH Articulated Multi-movement System Loading Variations

	a	b	c
	1000mm	1000mm	100Kg*
	Series 300HH Maximum Articulated Multi-movement Pendant System Load		
* Figures shown are maximum load for the pendant system and do not include loads exerted by accessories or equipment. For remaining/allowable user load, subtract accessory and equipment loads from the figure given at c.			

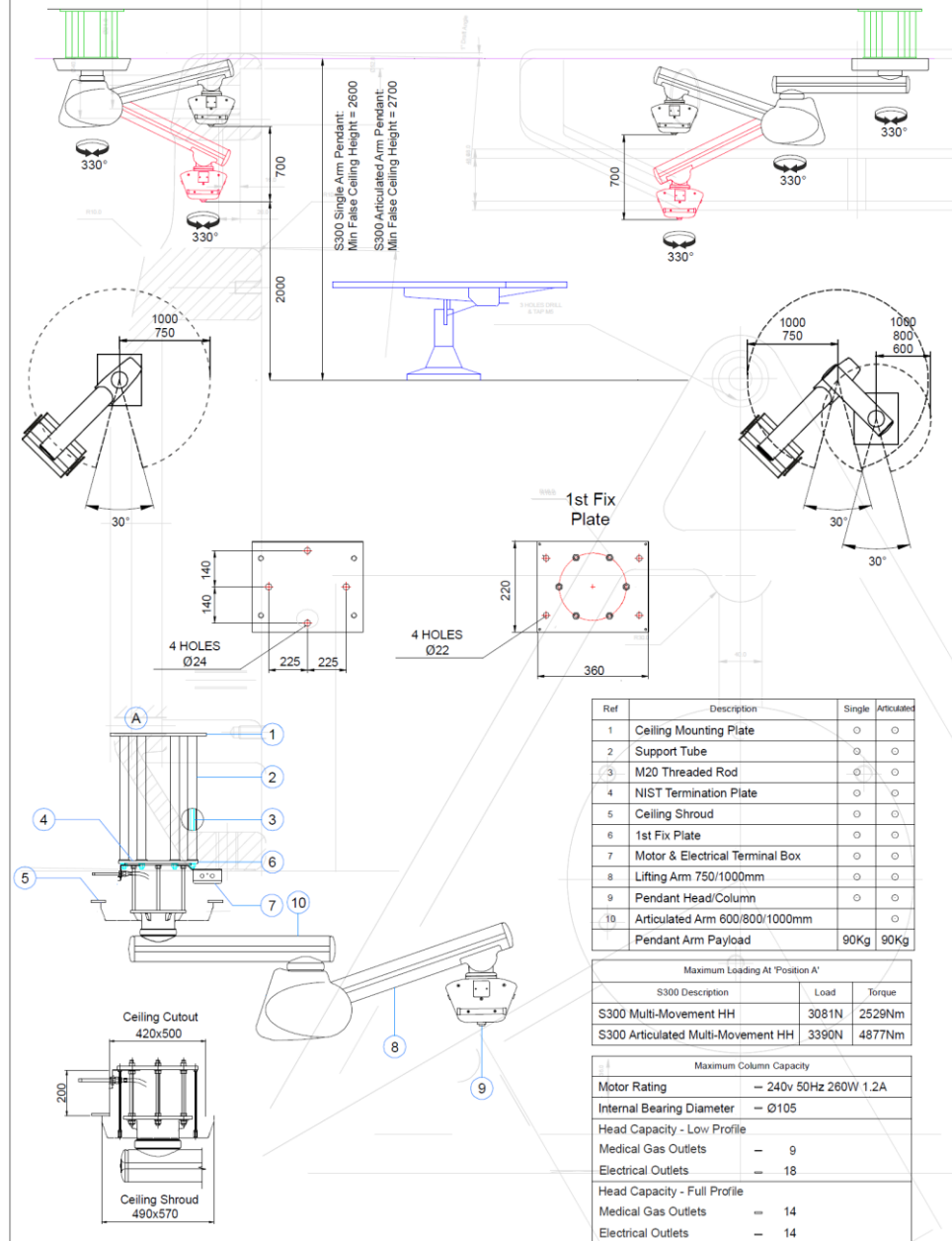
Lift Motor Control Unit

Electrical rating (input) :	230v, 50Hz, 20A
Electrical rating (output):	24vDC (motor), 300mA (sensors)

Lift Motor Assembly

Electrical rating:	24vDC, 5A Maximum
Raise/lower torque:	4000N

S300HH MULTI-MOVEMENT PENDANT - TECHNICAL DATA SHEET



HTM02-01 compliant

Note: This data sheet is to be used for reference purposes only and is subject to change without notification