



starkstrom

a Progility company

Powering Healthcare

+44 (0)20 8868 3732

www.starkstrom.com

S100 RIGID & S200 RETRACTABLE PENDANTS

Series 100

Ceiling mounted rigid pendant, either as a single square column or rotatable triangular column with the facility to mount accessories.

Series 200

Ceiling mounted retractable pendant as a single square column with 300mm electrically driven vertical movement controlled via a remote hand switch.

- Available in a choice of stainless steel or powder coated finish to suit any theatre or room environment.
- Multiple medical gas, electrical, AV, data and nurse call sockets.
- Horizontally mounted gas terminal units for quick and easy connection.
- Unique ability to mount 16 socket outlets around the lower edge of the pendant for improved access.
- Medical rail and hook attachments can be added to support clinical items.
- Minimal loading on ceiling makes it quick and easy to install.
- Thousands of installations fitted worldwide.
- Standard 300mm stroke motor, or 400mm stroke motor available on request.
- Unique low ceiling retractable versions available on request.

Commercial Benefits:

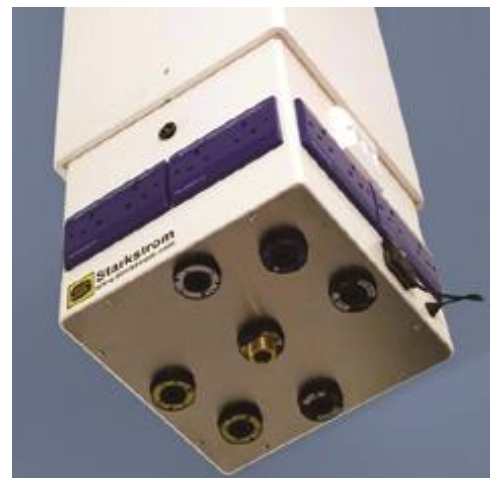
- Low maintenance requirement.
- Modular design with low lifetime cost.
- UK manufactured - competitive pricing - PFI proven.
- Full installation, commissioning and service available.



S100



S200

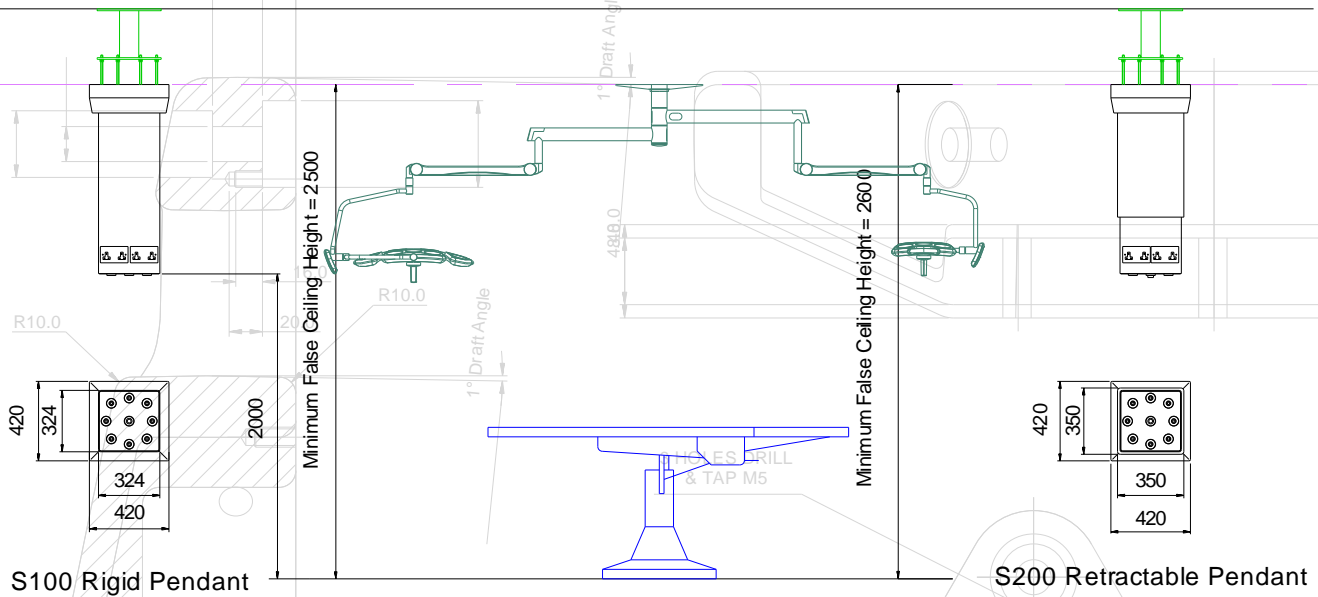


www.starkstrom.com

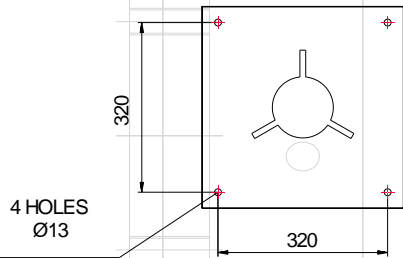
256 Field End Road, Eastcote, Ruislip, Middlesex, HA4 9UW, UK
Tel: +44 (0) 20 8868 3732 Fax: +44 (0) 20 8868 3736



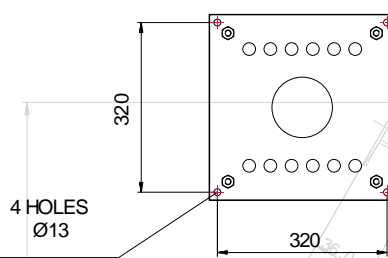
S100 RIGID / S200 RETRACTABLE PENDANT - TECHNICAL DATA SHEET



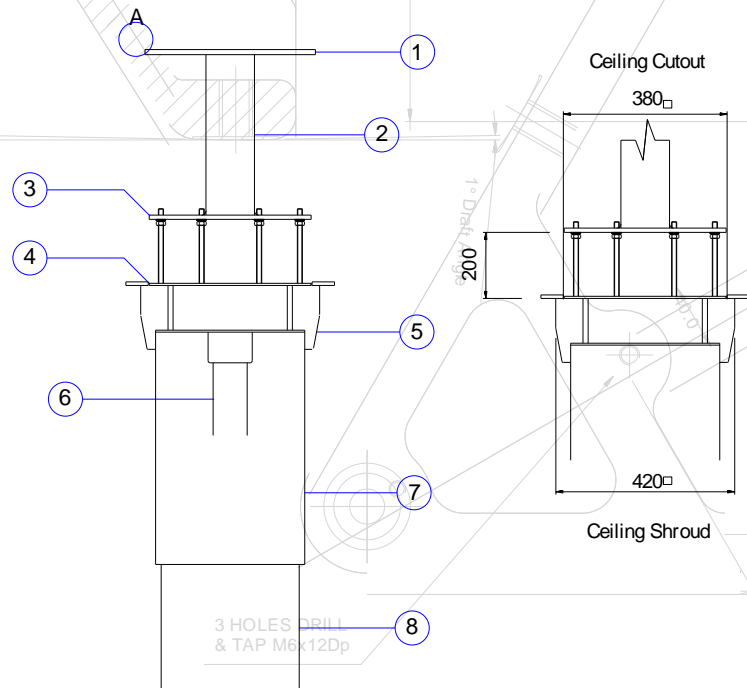
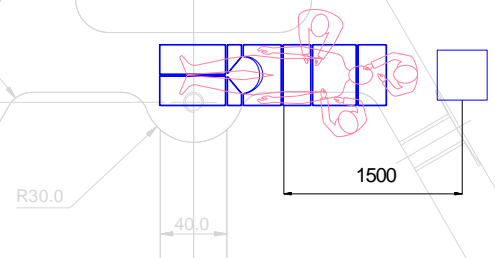
Soffit Plate Drilling



1st Fix Plate



Suggested Layout



Ref	Description	S100 Rigid	S200 Retractable
1*		○	○
2*	Support Tube	○	○
3*	Interface Plate	○	○
4	1st Fix NIST Plate	○	○
5	Ceiling Shroud	○	○
6	Motor		○
7	Outer Body		○
8	Pendant body	○	○

Loading At 'Position A'		
Description	Load	Torque
S100 Rigid	590N	83Nm
S200 Retractable	885N	124Nm

Pendant Capacity	
Motor Rating	= 240v 50Hz 260W 1.2A
Maximum Gas Content	= 8 Gas + 1 AGSS
Maximum Electrical Content	= 16 x 13A Socket Outlet
Maximum ELV Content	= 8 x Single Gang Outlet